

Newage Technology System Software And USB Assist

Processor Installation Instruction

1. Notice : Please, first **install system program**, then insert **usb assist processor**. Otherwise, windows will install wrong driver especially for **XP system**. In the same time, it spend more spirit and step when there correct driver.
2. First install system setup program in install disk. Ex: SETUP.EXE.
3. Then usb assist processor insert into computer before install system program.
4. On ME windows, it can automatically finish setup of usb driver. But on **windows XP** install usb driver just need to direct to disk position. Ex: M:\

1. Step of install on windows XP
2. Instruction in update install in driver on windows XP
3. The way of open [Device Manager] in [Properties] on windows XP

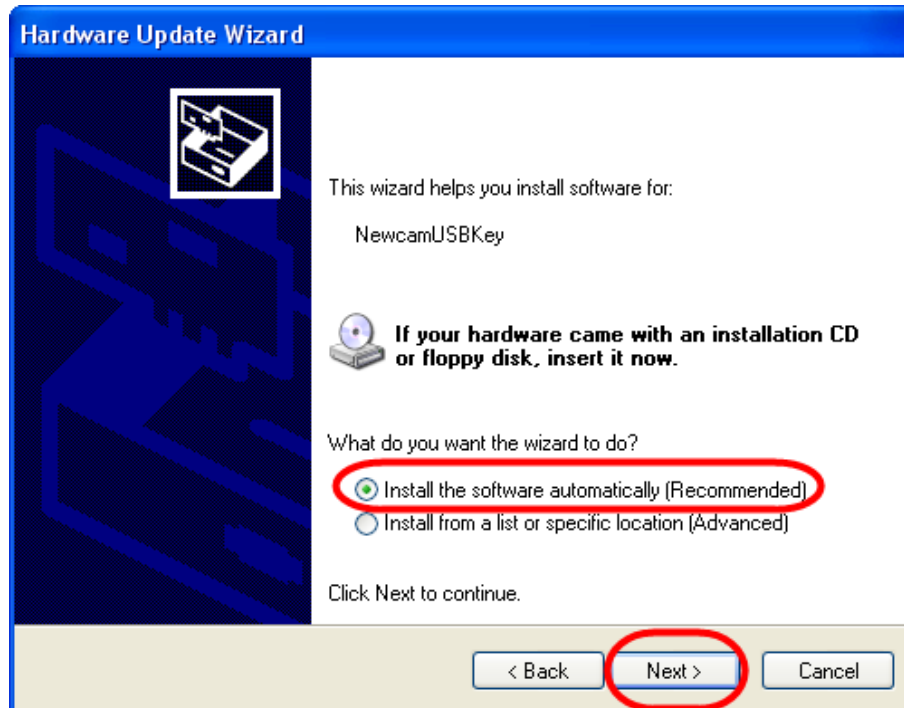
Step of install on windows XP

1. First install system setup program in install disk. Ex: SETUP.EXE.
2. Then usb assist processor insert into computer before install system program.

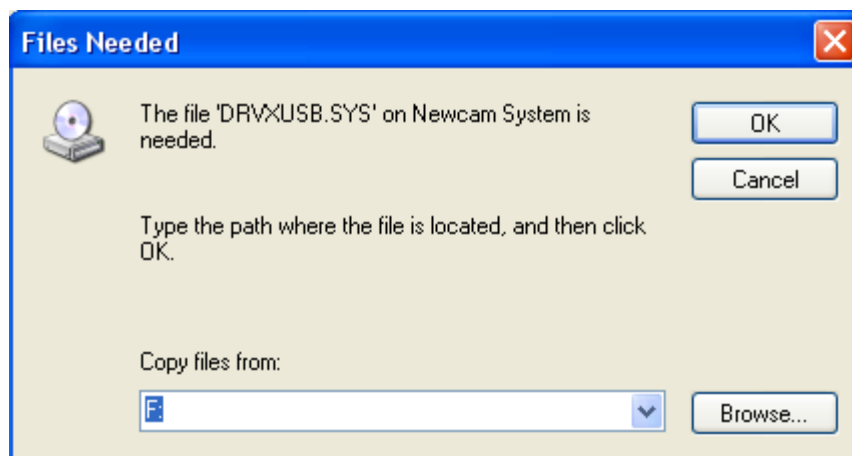
Then there will appear dialog [Hardware updates Wizard] below

Please choose[☉ Install the software automatically(Recommended)] ,

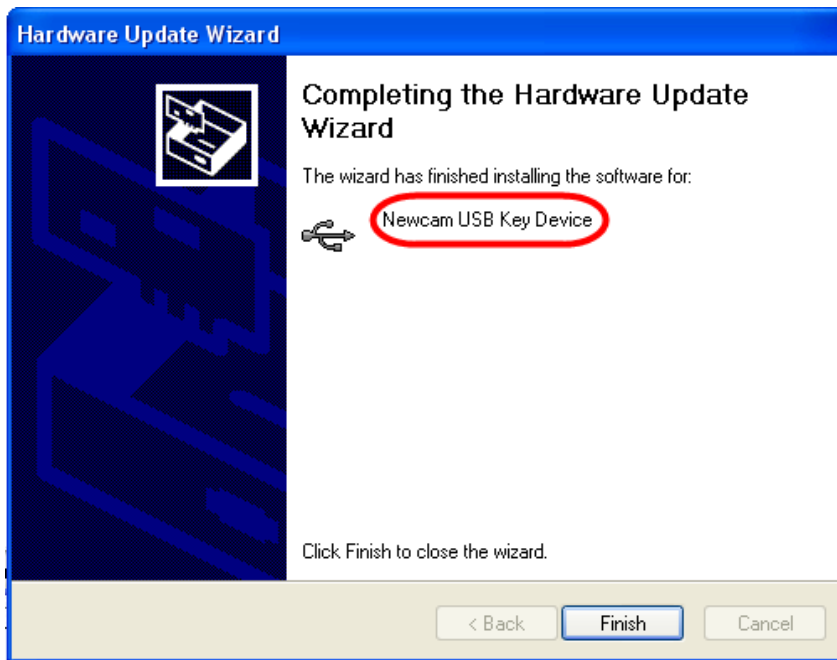
And press Next.



3. Then system will ask position of DRVXUSB.SYS that appear dialog below. Please input activity position (ex: F:)or press [Browse...] to find out the position. On general, there are put installation disk, or download at our website.

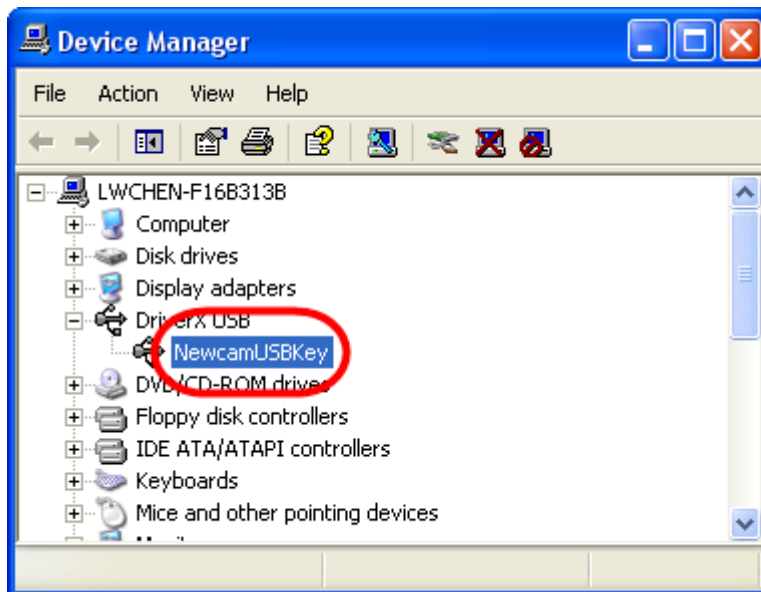


4. Setup be finished, then appear dialog below and press [Finish]



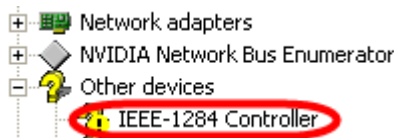
5. Don't restart computer, there can execute program immediately.
6. Open [Device Manager] in [Properties] that can find out new device [NewcamUSBKey], then setup will be finished.

Please follow appendix below paper, that open [Device Manager] method in [Properties].



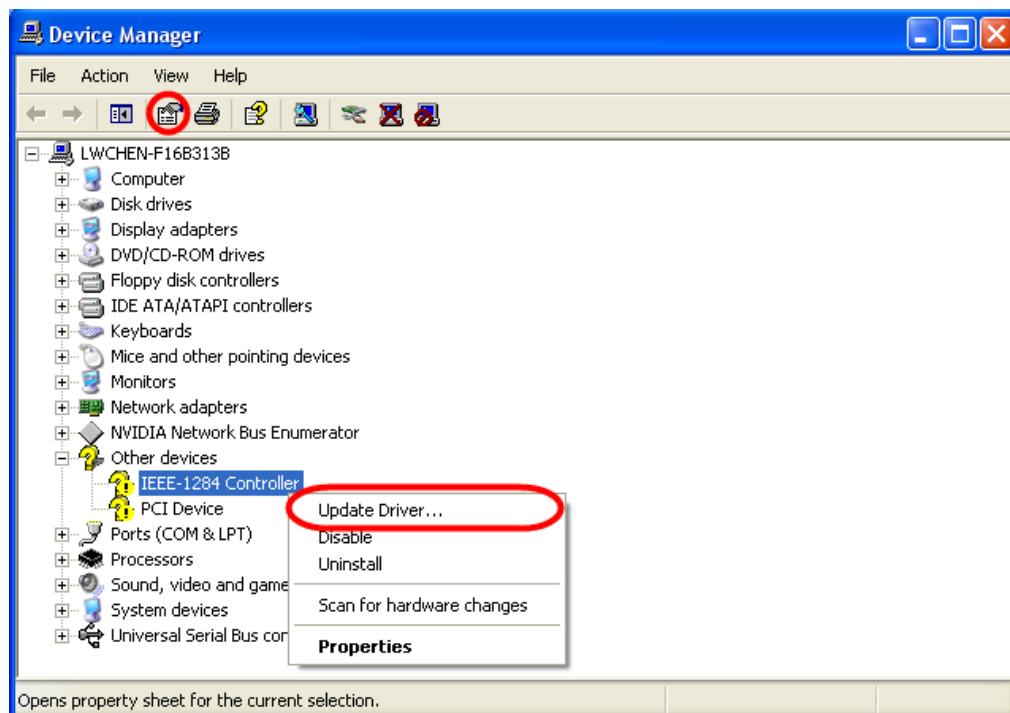
Instruction in update install in driver on windows XP

1. If you install Newage Technology's driver, that emerge error or install errors driver , then you need update driver. See step above.
2. Open [Properties] and method follow appendix below of paper. Maybe you can see the problem within picture below. [Universal Serial Bus Controller] of [USB Hub Root]or[Other Device] of [IEEE-1284 Controller]



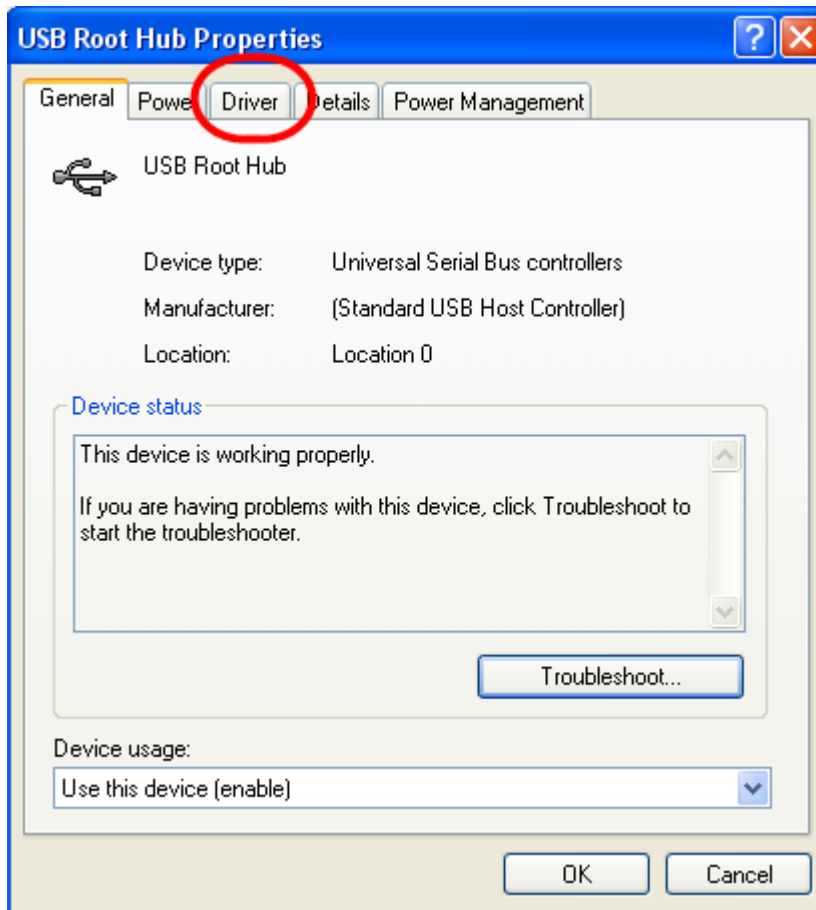
The following of [IEEE-1284 Controller]below.

Call out the update[IEEE-1284 Controller] of driver. There are two ways :

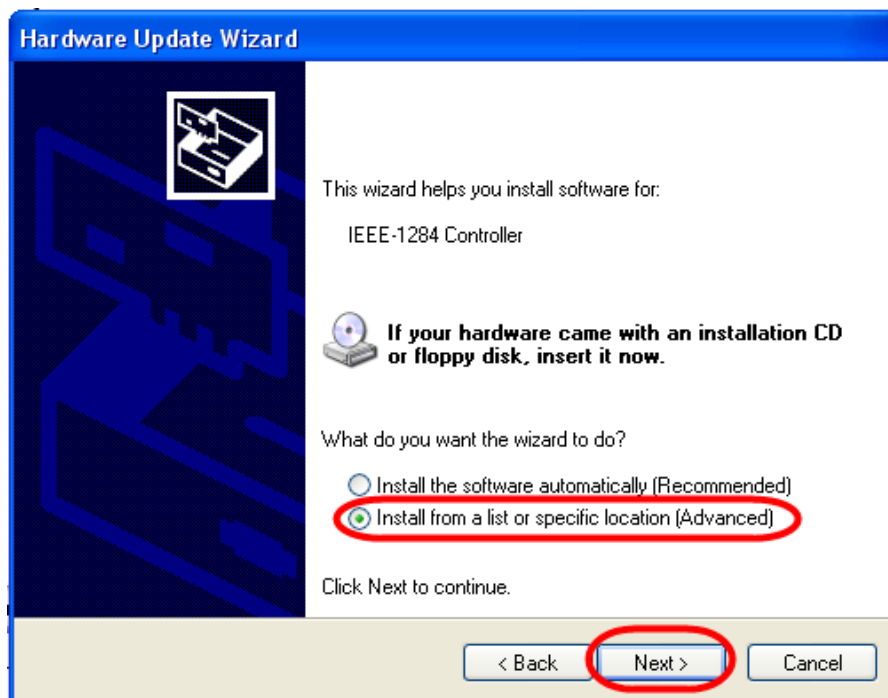


(1)Use **right mouse bottom** click[IEEE-1284 Controller], then call out [Properties]and click[Update Driver...]above.

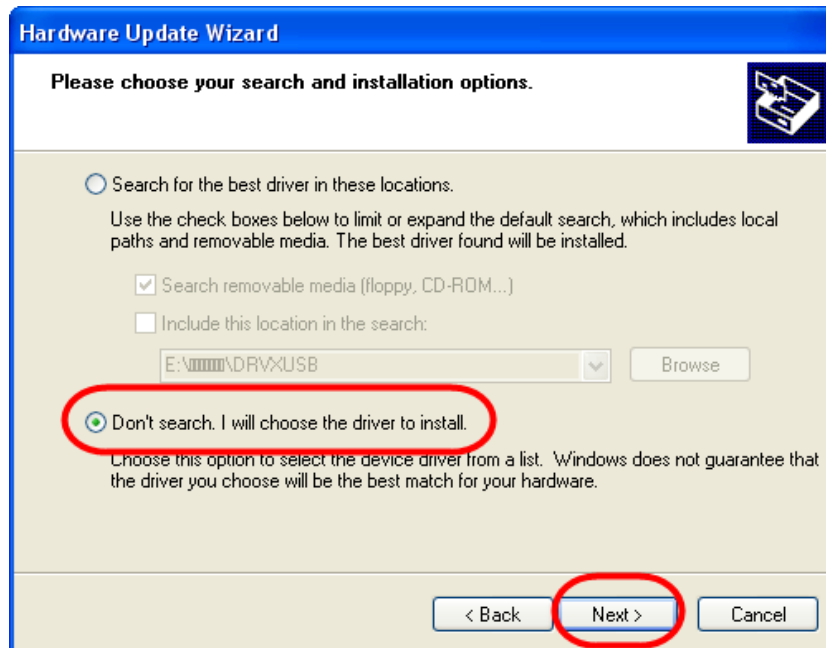
(2)Use left mouse bottom click[IEEE-1284 Controller], and press picture of[Properties]. System will emerge [USB Root Hub Properties]below, then choose [Driver]and press[Update Driver...]



3. System call out[Hardware Update Wizard]
Choose[☉ Install from a list or specific location(Advance)]and press Next.

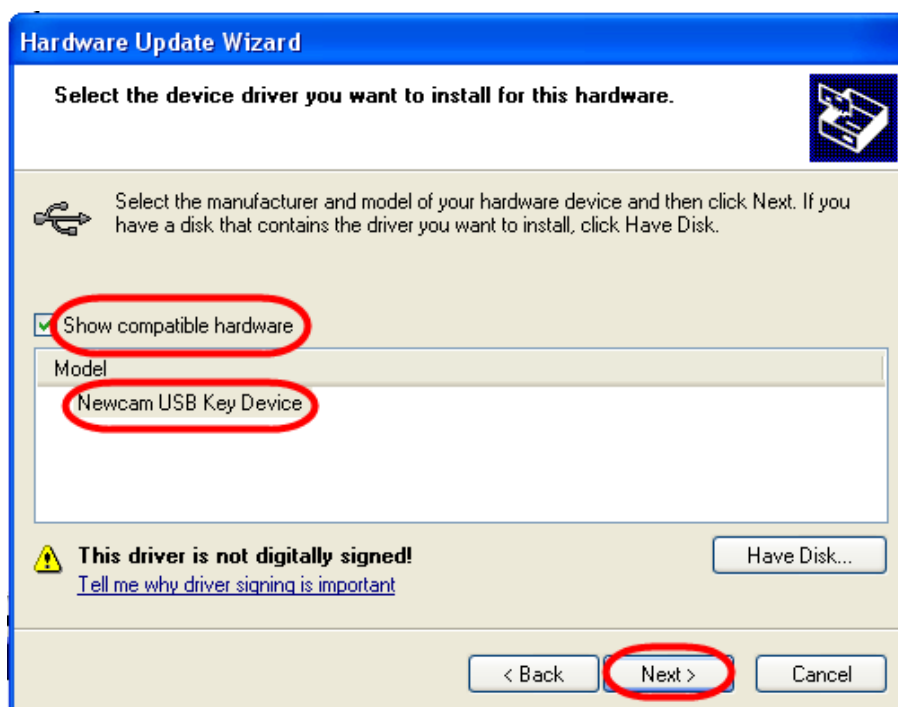


4. In [Hardware Update Wizard],
click[☉ Don't search . I will choose the driver to install]and press Next.

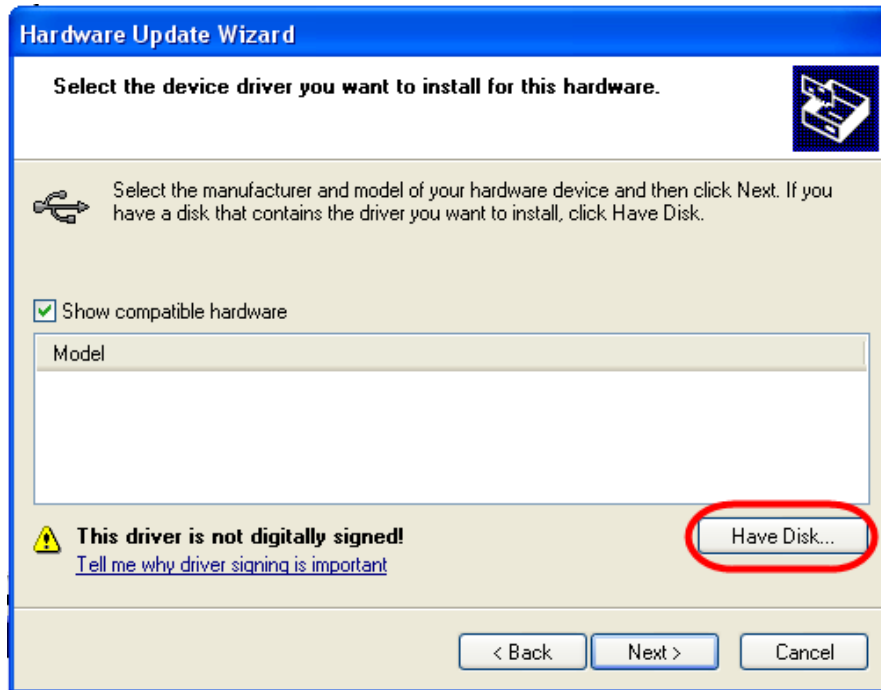


5. There are two difference with [select the device driver you want to install for this hardware].

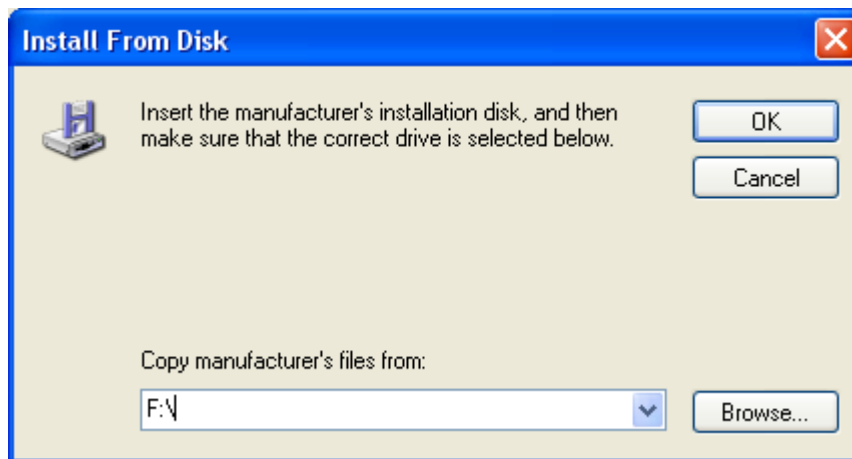
(1)First, if you can see [Model]box display [Newcam USB Key Device]. Select [Show compatible hardware] and [Newcam USB Key Device] on [Hardware Update Wizard] dialog, then press Next.



(2) If [Model] box not displaying anything, we can press [Have Disk...]. System will appear dialog below.

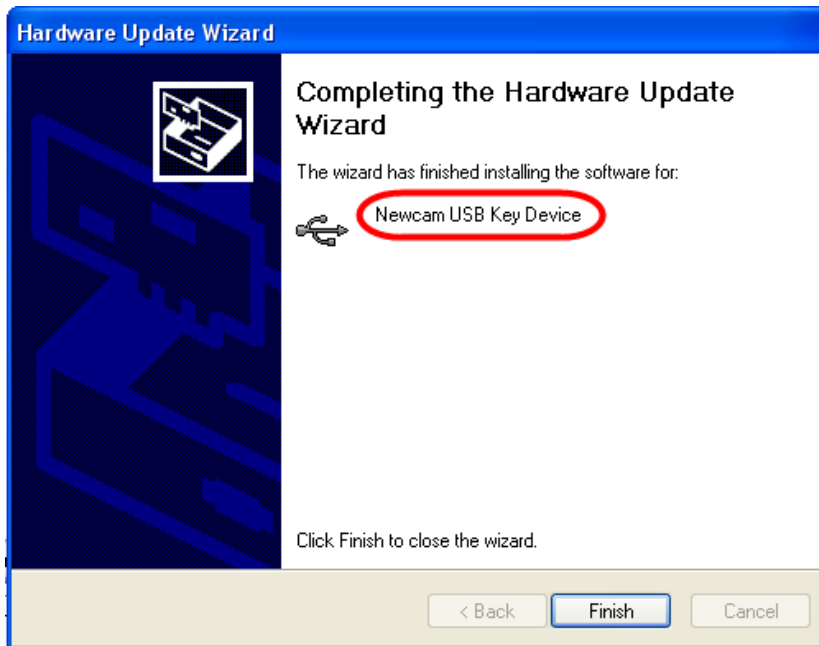


System will ask position of NcamUSB.inf & DRVXUSB.SYS. Please input activity position (ex: F:) or press [Browse...] to find out the position. In general, there are put intallation disk, or download at our website.

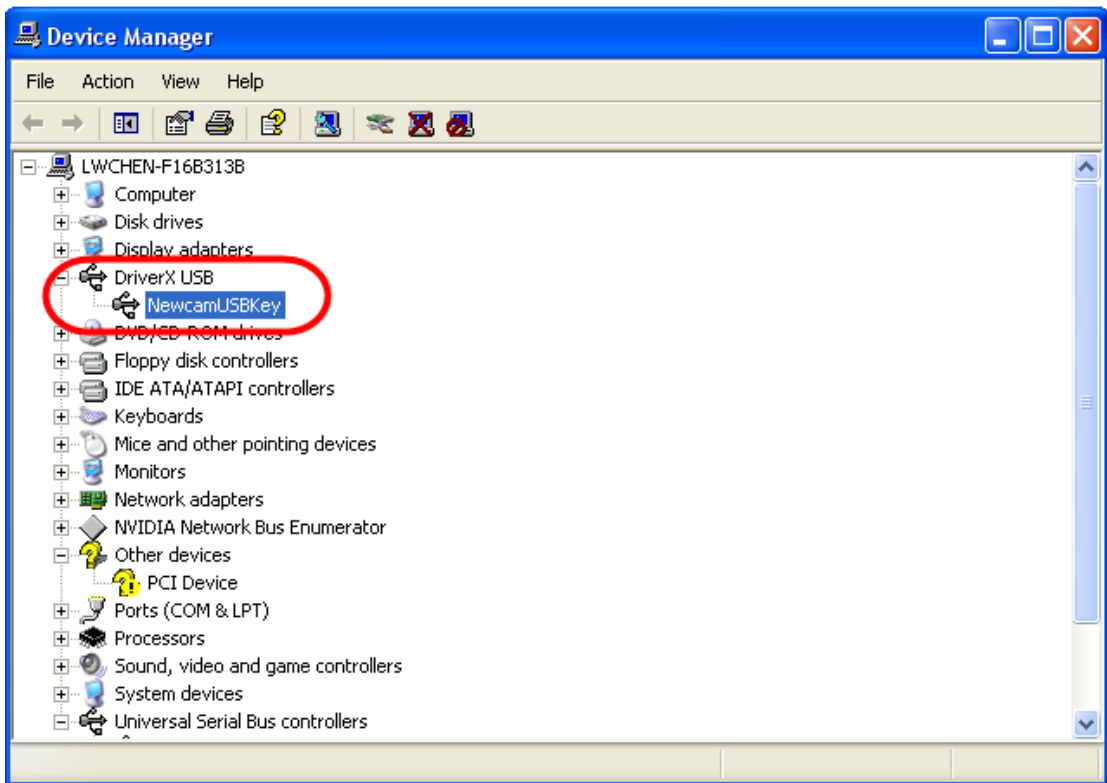


When installation position is decided. Press [OK] and return to [select the device driver you want to install for this hardware] and press Next.

6. [Hardware Update Wizard]windows display the installed”Newacm USB Key Device”, and press finish.

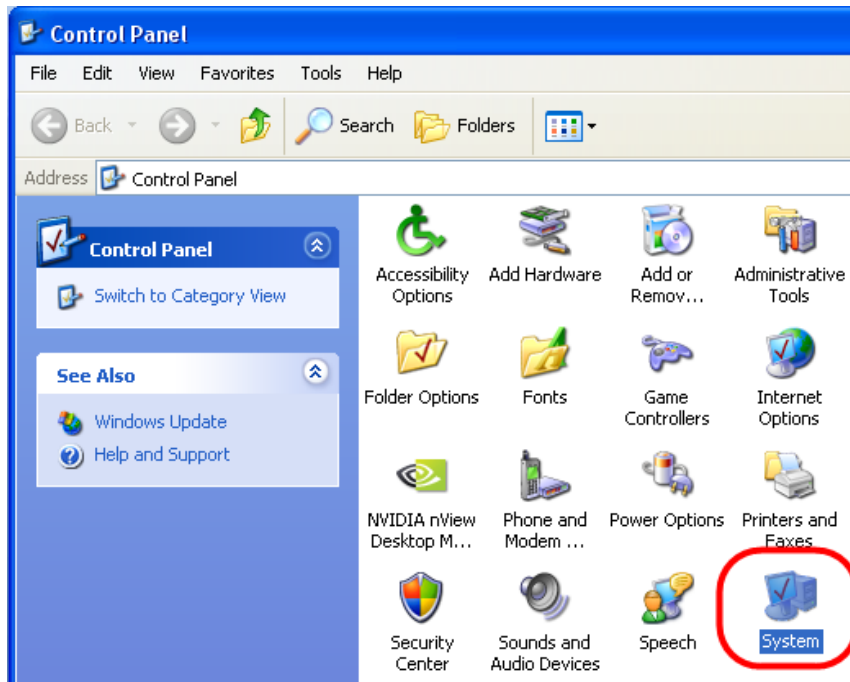


7. Open [Device Manager] to see [NewcamUSBKey]below, and will be done.

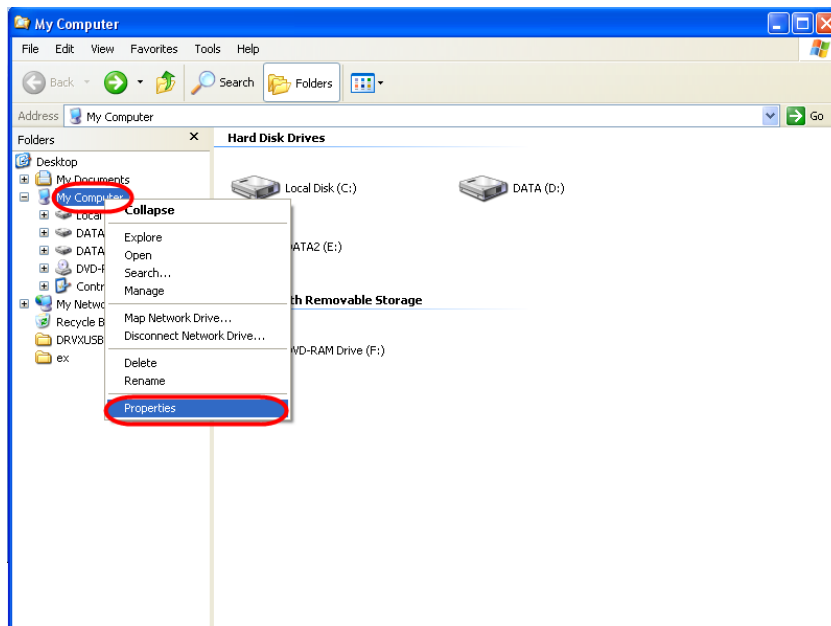


The way of open [Device Manager] in [Properties] on windows XP :

1. Open windows of Properties :
 - [START] -> [Control Panel], open controller and use left mouse bottom select "system" to execute.



- Move mouse and use right mouse bottom select [My Computer] or execute [Explorer], and use right mouse bottom select [My Computer] . Appear drop-down manu and use left mouse bottom to click [Properties]. Open [System Properties] dialog and select [Device Manager]. Watch the picture below.



2. Open [System Properties] windows and select [Hardware], then choose [Device Manager] ◦ Watch the picture below.

